



ALL TYPE OF:
**DIAMOND TOOLS,
NANO CHEMICALS AND
GLAZE COMPOUND**



REAL TRADERS

Shakti Industrial Estate, Plot No. - 63,
B/h. GSPC Gas Office, 8-A, National Highway,
Opp. Krishna Colour Chem., Morbi - 2.

+91 97271 13360
+91 98797 19475
info@realtraders.in, export@realtraders.in
www.realtraders.in
realtraders
real_traders_export



WERE
CUSTOMER SATISFACTION
MATTERS



COMPANY PROFILE

Real Traders is a Diamond Tools and Nano Chemical providing company, having its presence since 2010, located in Morbi, Gujarat. The only purpose of establishing this company is to supply excellent Diamond Tools and Nano Chemical to a progressively flourishing ceramic industry in the utmost customer-oriented manner. Along with the growth of the ceramic industry, trade and reputation of **Real Traders** have enlarged. To fulfill our clients growing requirements, we came up with an expansion plan which possesses wide range of quality products and professionalism in business.

Hence, in the present times, we offer a well and polished rounded choice of materials & tools for Ceramic Tiles manufacturer. Irrespective of you being ceramicist, sculptor, mold creator or proficient potter, we have a resolution for you all.

We firmly believe can be your most trust worthy partner to create a better career height.

Diamond Tools for Ceramic Industry

DIAMOND CALIBRATION ROLLER

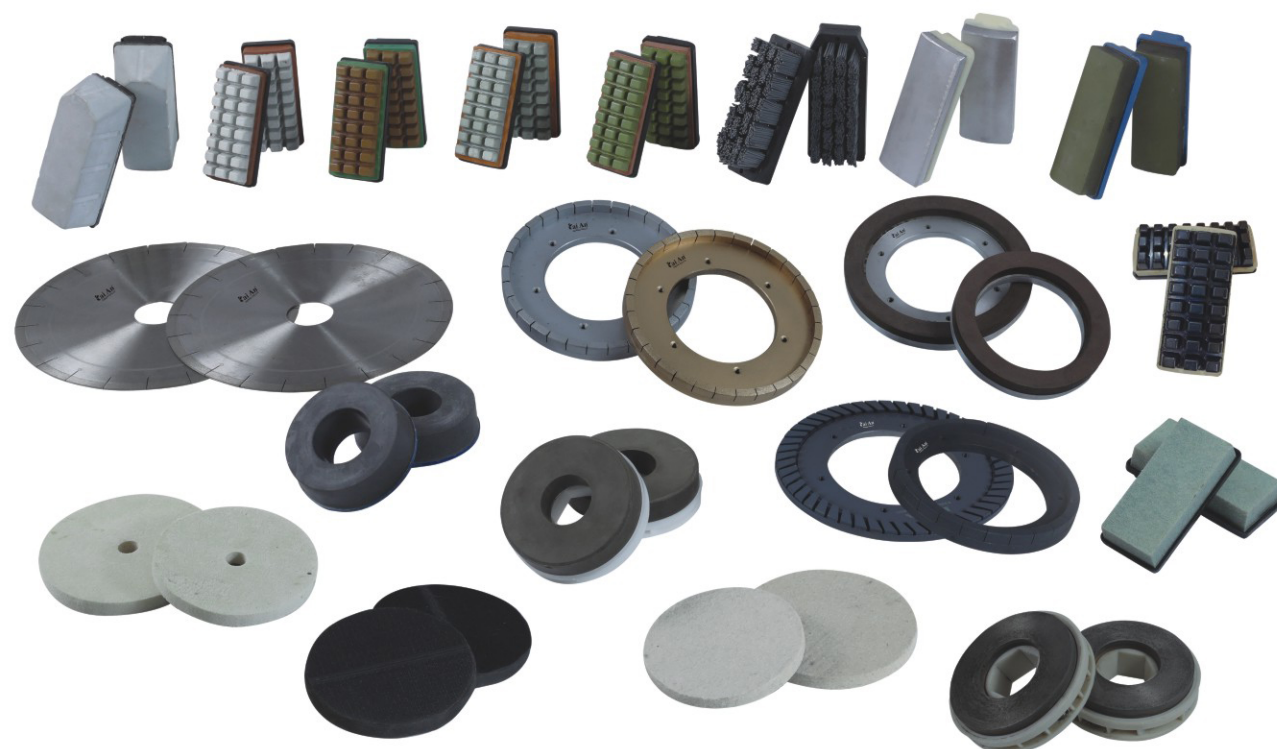


PRODUCT SPECIFICATION

Diamond calibrating roller is the most common used tools among ceramic Industry. It is used to make suitable thickness and flatness before polishing,. Using the advanced Technology and formula, Our calibrating roller is approved for its good sharpness, long working time, low energy consumption, low working noise, excellent working effect and stable performance.

We can supply the customized size and formula according to customer's machine condition.





PRODUCT SPECIFICATION

Aiming at the different process and material of glazed tiles, Tai An was developed a series of glazed tools successfully. It divides into full polishing series and semi-polishing series. Full polishing series including thick glazed tiles full polishing and normal glazed tile full polishing.

Diamond grinding and polishing tools mainly used for calibrating, grinding and polishing on natural stone and artificial stone. The main tools include diamond abrasive, resin-bond, glaze abrasive, silicon abrasive, grinding brush and diamond roller.



PRODUCT SPECIFICATION

Glaze Polishing abrasive is fixed on normal polishing machine head to make flexible full-polishing in the surface of glaze tile. Our Glaze Polishing abrasives are approved for their excellent shaping effect, good sharpness, high gloss, no scratch and long working lifetime.



PRODUCT SPECIFICATION

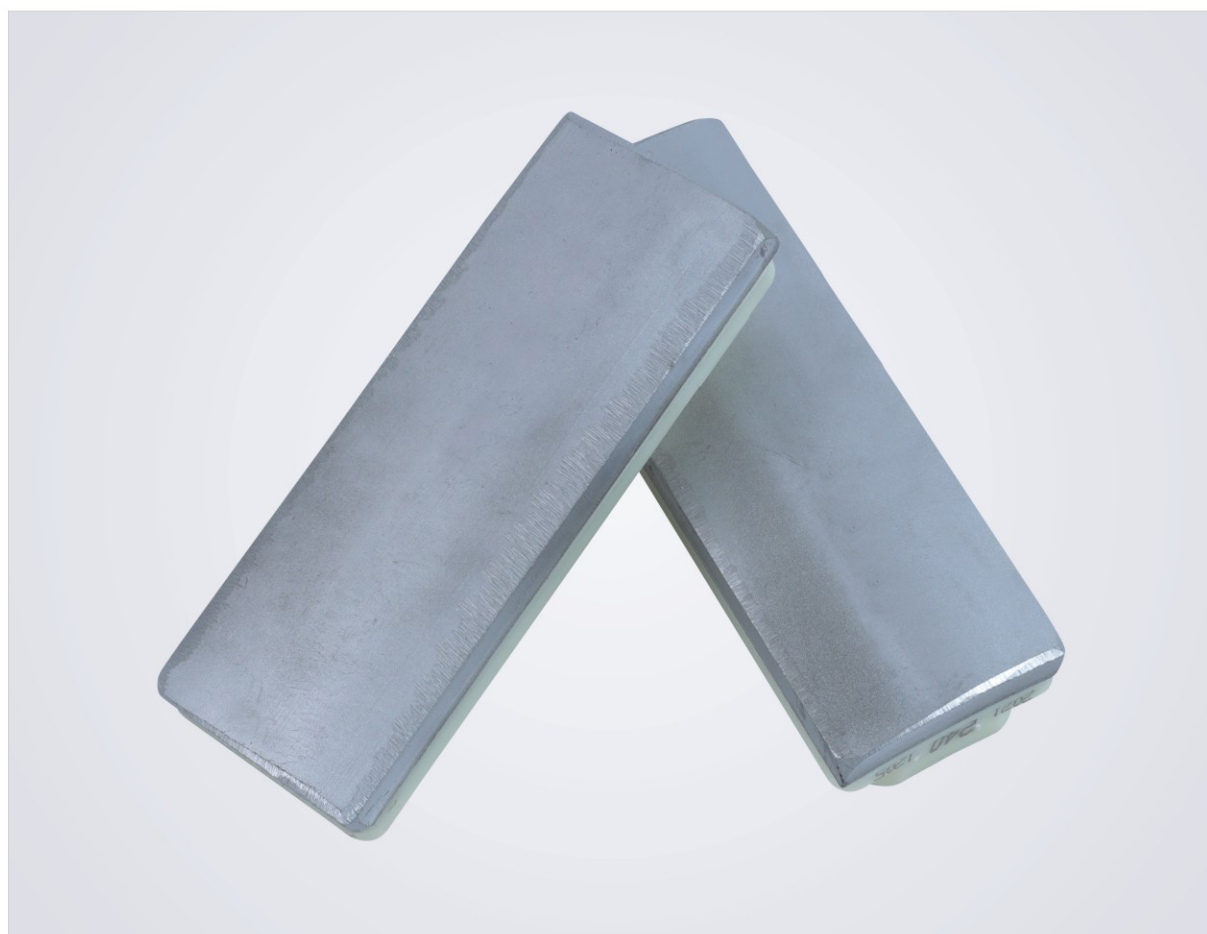
This silicon abrasive can be used for rough polishing on the surface of S.S. and D.C. tile. They are traditional grinding and polishing materials with the longest history and the most mature technique in the field of hard and fragile polishing materials. There are still high consumption of these traditional abrasives in the polishing tiles field.

Diamond abrasive is used to make rough and medium grinding on double charge and soluble salt tile's surface in the replace of traditional silicon abrasives. Our Diamond abrasive is approved for their high grinding efficiency, excellent grinding effect with advancement and reliability. Its application cost is much lower than the silicon abrasive.



PRODUCT SPECIFICATION

Grinding brushes are used in polishing machines to make mat and flexible grinding in order to achieve silk-like and rustic-like effect on different surface of glazed Porcelain Tiles and Granitoid Tiles, such as flat surface, concave and convex surface and sheepskin surface etc. The tiles gloss after processing can be controlled from 6° C to 30° C



PRODUCT SPECIFICATION

Metal-bond diamond abrasive is used to make rough and medium grinding on first crystal tiles surface in the replace of traditional silicon abrasive. Our metal-bond diamond abrasive are approved for their high grinding efficiency, excellent grinding effect, competitive price, performance ratio and low cost.



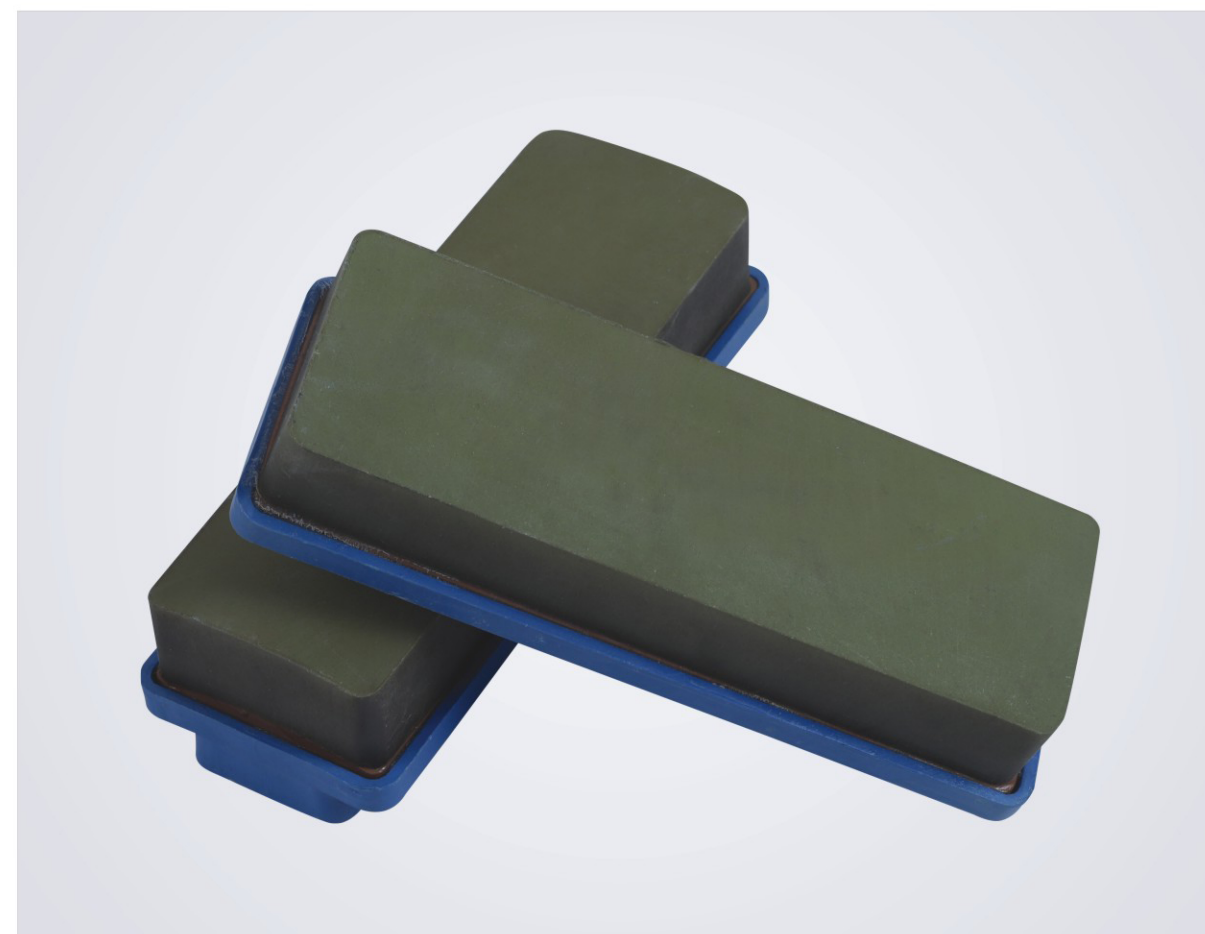
PRODUCT SPECIFICATION

Glaze Polishing abrasive is fixed on normal polishing machine head to make flexible full-polishing and frit crystal tiles polishing on the surface of thick glazed tile. Our Glaze Polishing Abrasives are approved for their excellent shaping effect, good sharpness high gloss, no scratch and long workig lifetime.



PRODUCT SPECIFICATION

Fiber Abrasive (150#-2000#) and rubber abrasive (400#-1000#) are fixed on normal polishing machine to make flexible semi-polishing on the surface of glazed tile. Our abrasive are approved for their excellent shaping effect, good sharpness, high gloss, no scratch and long working lifetime, The tiles gloss after nano polished can be controlled from 15 to 40° C.



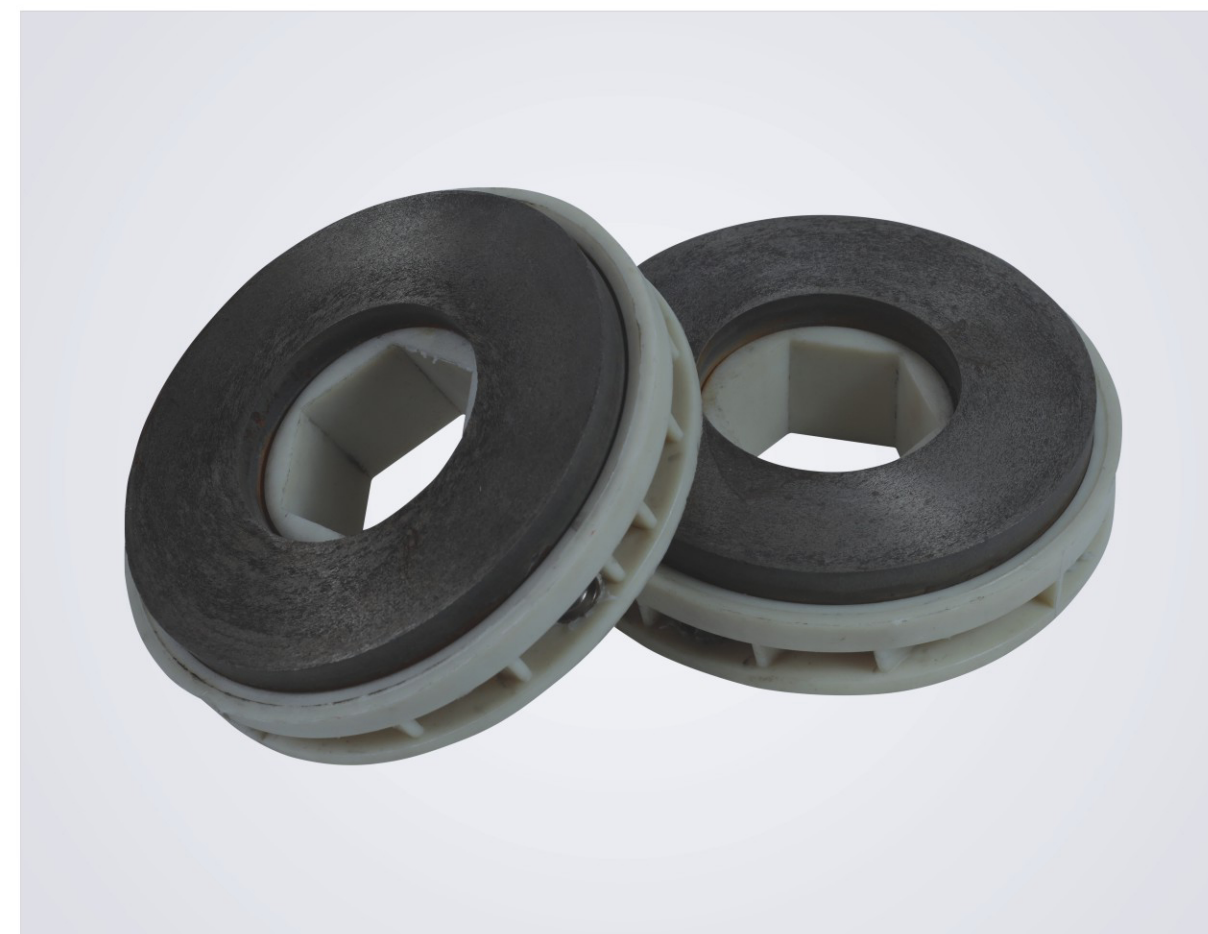
PRODUCT SPECIFICATION

Resin-bond abrasive are used to make fine and finish grinding in place of silicon abrasive. It can increase the surface glossy and saving the production cost.



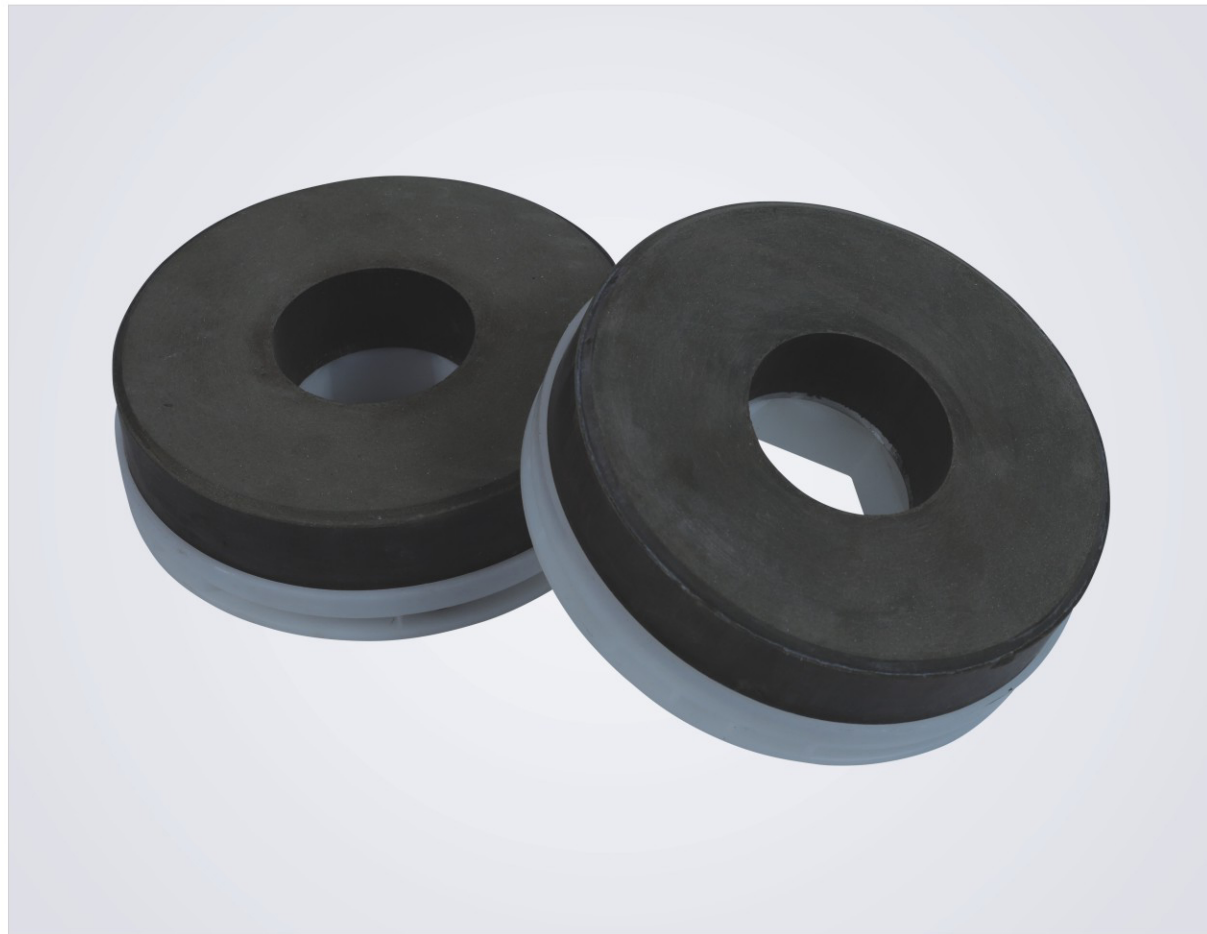
PRODUCT SPECIFICATION

These abrasive are used to make rough, medium and fine grinding and polishing on Porcelain/vitrified Tile Surface. They are traditional grinding and polishing material with the longest history and the most mature technique in the field of hard and fragile polishing materials. There are still high consumption of these traditional abrasives in the polishing tiles field.



PRODUCT SPECIFICATION

Our metal-bond Diamond chamfering wheels are approved for their high working efficiency and good chamfering effect. Metal-bond Diamond Chamfering wheel not only has the same working effect as the Resin-bond silicon Carbide Chamfering Wheel, but also the working life is 50 times longer than Resin-bond Silicon Carbide Chamfering Wheel.



PRODUCT SPECIFICATION

It is used for Chamfering the edge of tiles stones into 45° angle after fine squaring. Chamfering wheel can be divided into Resin-bond Silicon Carbide Chamfering Wheel and Metal-bond Diamond Chamfering Wheel.



PRODUCT SPECIFICATION

Silicon Chamfering Wheels are used to make chamfering after on Ceramic Tiles.

The Function is to guarantee the safety in transportation and usage.

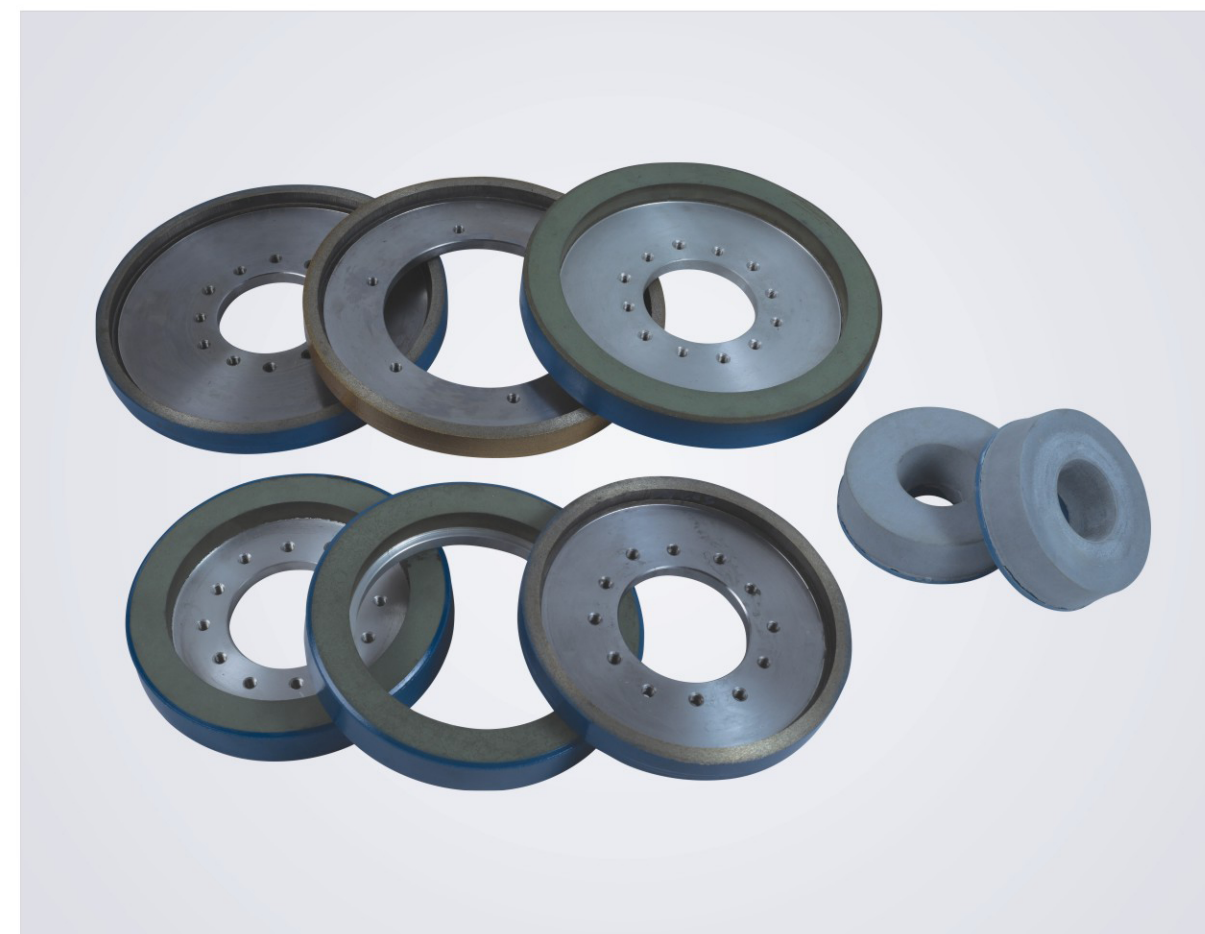
DIAMOND CUTTING SAW BLADE FOR TILES CUTTING



PRODUCT SPECIFICATION

Small Saw blades are mainly used for cutting marble, granite, sandstone, ceramic, concrete, asphalt, refractory brick, Their advantages are high efficiency of cutting, long lifespan and excellent quality.

DRY SQUARING SOLUTION FOR WALL & PORCELAIN TILES



PRODUCT SPECIFICATION

These products are used in dry squaring line to squaring the tiles edges for wall tiles. It can reach the same effect of wet squaring line. Our dry squaring wheels are approved for their high cutting efficiency, excellent effect and stable performance and it can reach the requirements of Industrial application.



PRODUCT SPECIFICATION

Diamond and Other Squaring Wheels are used to make modifying the uprightness of ceramic tiles four edges to achieve scheduled size. It is a necessary squaring tool for big size glaze ceramic tiles, porcelain body tiles and polished tiles. The advantages of our Squaring wheels can be summarized as following:

1. Good Sharpness, Long Working and Low Working Noise.
2. Good Uprightness and precise size without breaking and Chipping.
3. Strict production process control and stable Quality.
4. Individual formulation and grit match are available for different Ceramic Tiles Industry.



PRODUCT SPECIFICATION

Nano Super Wax is a latest application of nano technology, it is and latest hi-tech eco friendly product which used for increasing the gloss and stain-proof performance of polished tile. Nano super wax is colorless and transparent liquid, after applied on the surface, it would fill the micro air holes and tinny cracks on the tile surface, and form a compact protective film which furthest prevent moved with some clean water easily. The nano wax is transparent liquid, it would not change color nor affect the contrary it would greatly increase the gloss of tile (90°C Maximum). Additionally, it is inorganic nano material with the function of sterilization and self-clean.

Nano Liquid A - Special Colours

- Black • Brown • Red

GLAZE COMPOUND



- PGVT** :- Engobe, Base, TR
Matt GVT :- Engobe, Matt Glaze
Carving GVT :- Engobe, Carving Glaze



PRODUCT SPECIFICATION

A glaze is thin vitreous layer formed on the ceramic tile body. First engobe is applied which is the primary coating on the surface of the ceramic body and then base glaze which is called base glaze which is opaque in nature digital print is done and to protect the graphic or marble design top transparent coating is done which help to develop at desired darkness This glaze surface is having almost nil porosity after firing, resistant to acids house old chemicals and scratch resistant. Aesthetically after firing the surface of the glaze gives good appearance satin mat surface and with desired surface curvature and planarity passing through the polishing process glassy surface is obtained. Glaze is chemically alkaline in nature.

GLAZES ARE CLASSIFIED AS PER THE FIRING TEMPERATURE

- DFF (Double fast Firing) -1050 to 1080
- Monocuttura -1130-1180
- Vitirified -1180-1200

Real Traders Glaze compounds are commercial and technically customized to provide the best aesthetic, technical & commercial value. Compounds are designed for desired thermal expansions, brightness and better colour development, resulting in less colour/ink consumption thus saving huge raw material & process cost.

OUR VALUABLE CUSTOMERS



WE ARE EXPORT IN :



BANGLADESH



NEPAL